



HELI DIFFs

HeliDIFFs LLC

Founded by a team with over 25 years of experience, with a commitment to engineering excellence and unrivaled customer service

HeliSkid Design

Designed for straightforward Installation, Commissioning, and In-Service Use, the HeliSkid operates with an In-Line Inductor Capable of Delivering Foam Within NFPA Tolerances. The HeliSkid is the worry free Fire Protection Solution

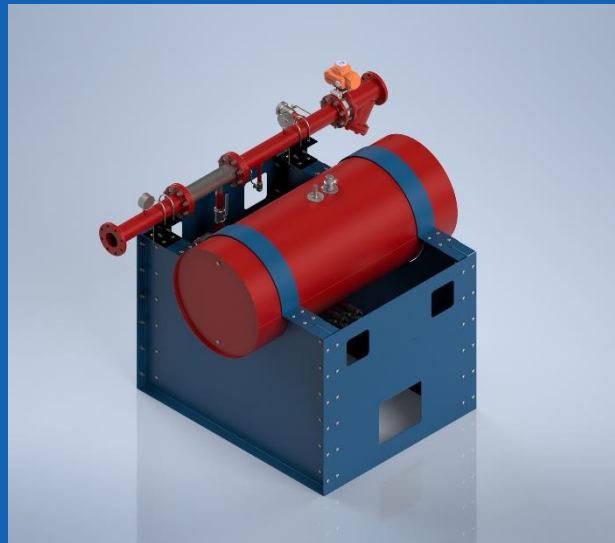
Testing and Inspection

- Hydrostatic Testing to 350 PSI to ANSI Standards
- Visual and Radiographic Weld NDT to AWS Standards
- Complete Material Certificate Package per Class Requirements

HeliDIFFs LLC

Fire Protection Systems

HeliSkid-Standard Foam Skid HD-SKD-STD



Constructed of extremely corrosion resistant Stainless Steel 316, the HeliSkid operates in conjunction with HeliNozzles to suppress fires with precision mixing of specially selected foam concentrates in a pressurized water line to quickly make the helipad safe for emergency services to complete their rescue efforts.

Designed Uses:

- Offshore Helicopter Deck
- Commercial or Hospital Rooftop Helipad
- EV Charging Stations & Parking Areas
- Battery Energy Storage Systems (ESS)

- Versatile, Modular Skid Frame Constructed of Extremely Corrosion Resistant Stainless Steel 316
- Multiple Options to Design and Fabricate to Suit the Most Demanding of Applications.
- For use with ICAO Class B and Class C AFFF Foams, as well as options for Non-Fluorinated Class B Foam
- Can be delivered as a complete system with HeliNozzles with an optional Seal by a Licensed Professional Engineer
- Design Pressure: 350 PSI / 24 bar
- Working Pressure: 100-150 PSI/ 6.8-10 bar
- Water Line: Standard 4" with 150# ANSI Fittings
 - Optional 1-1/2" Hose Reel Line
- Motor Operated Butterfly/Deluge Valve
- Compatible with IR/UV Flame Detectors for Automatic Activation
- Foam Concentration: 1%, 3%, or 6% in solution
- Tank Size: 50-300 Gallons
- Options Include:
 - Insulated Heated Enclosure
 - Custom Paint Scheme
 - Integrated Fire Pump

HeliDIFFs LLC
The HeliDIFFerence